



# Brownsea Bulletin

September 2008

## Dates to note:

- Thanksgiving Long Weekend (Office and Shop Closed) — October 11-13
- Mint Cookie Campaign — October 15-December 15
- 4th Annual Guide Stampeders Football Game — October 18
- International Fair — October 22
- Youth Awards — October 26
- Pumpkin Decorating Contest — October 30-November 1
- World AIDS Day Pathfinder/Ranger Event — November 30

## Inside this issue:

Office Directory	2
Commissioner's Corner	3
Campsite Orientations Leighton Centre	4
Camping Updates	5
International Committee	6
International Travel	8
Thinking Day Postcard Exchange	9
Youth Awards Ceremony	
Yellow Fish Road Area Dinner 2009—Help Wanted	10
Stampeders Football Game	
Area Awards 2007-8	11
Guide Shop	14

## On your To-do list

Excitement and energy is high as we begin a new Guiding year.

There's plenty to do, paper and craft supplies everywhere, and lots of new names and other things to learn (even for Guiders who've been "around a while").

As you do your planning, be sure to schedule some quality time with your family and friends, and time for yourself.

Take a walk, rent a movie, read a book, do something you enjoy *regularly*. It's good for you! And, for all you give and do for others, you deserve it!

## PUMPKIN DECORATING CONTEST!



Halloween is coming so we challenge you to paint, decorate or carve the "best" pumpkin.

Pumpkins will be accepted at the Guide Centre from 10 a.m. Thursday, October 30 until noon on Saturday, November 1.

Each entry must have a tag with: name of the artist(s), unit number, branch, district and division.

*Prizes for Sparks, Brownies, Guides, Pathfinders and Rangers.*

## Goodies for Guiders

Calgary Area Trainers are coming to a meeting hall near you to share an evening of tasty treats.

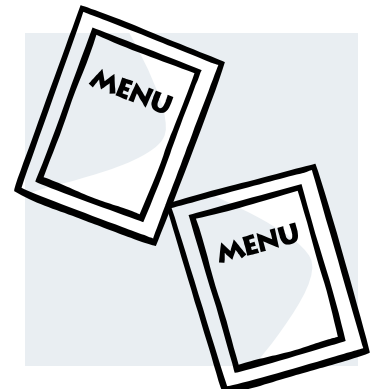
We're serving:

- ▶ new and fun ideas to share with your girls.
- ▶ an evening of laughing and learning together.
- ▶ food for your Guiding soul.

If you haven't received your invitation to *Training à la Carte* yet, ask your District Commissioner about the date, location, menu of activities and how to register.

Looking forward to seeing you there.

Bring your appetite for fun !



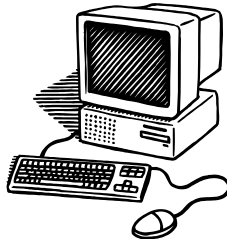
## CALGARY AREA GUIDE CENTRE

2188 Brownsea Drive NW  
Calgary, Alberta  
T2N 3G9

Office Hours:  
Monday - Friday, 9 a.m. - 5 p.m.

Shop Hours (September/October) :  
Monday, Tuesday, Wednesday  
and Friday: 10 a.m. - 5 p.m.  
Thursday: 10 a.m. - 8 p.m.  
Saturday: 10 a.m. - 4 p.m.

*The Guide Centre is closed on  
all statutory holidays and all  
long weekends.*



Find the *Brownsea Bulletin*  
and other great resources

on the web at...

**Calgary Area**

[www.calgareaguides.com](http://www.calgareaguides.com)

and

**Provincial website**

[www.albertagirlguides.ca](http://www.albertagirlguides.ca)

Also check out the

**National website**

[www.girlguides.ca](http://www.girlguides.ca)

## Area Office Directory

Phone: 403-283-8348

Contact Information		Voice	Mail Ext	E-Mail
Area Commissioner	Eileen Johansen	32		<a href="mailto:areacomm@calgareaguides.com">areacomm@calgareaguides.com</a>
Deputy Area Commissioner	Amber Lapp	33		
Deputy Area Commissioner	Annette Jaenen	34		
Office Administrator	Twyla	29		<a href="mailto:administrator@calgareaguides.com">administrator@calgareaguides.com</a>
Bookkeeper	Stephanie	31		<a href="mailto:bookkeeper@calgareaguides.com">bookkeeper@calgareaguides.com</a>
Database Coordinator	Shirley	n/a		<a href="mailto:shirleym@calgareaguides.com">shirleym@calgareaguides.com</a>
Adult Membership Support Coordinator	Joan	40		<a href="mailto:membership@calgareaguides.com">membership@calgareaguides.com</a>
Youth Member Support Coordinator	Sommer	27		<a href="mailto:youth@calgareaguides.com">youth@calgareaguides.com</a>
Resource Coordinator	Heather	30		<a href="mailto:resource@calgareaguides.com">resource@calgareaguides.com</a>
Marketing and Camp Coordinator	Tanya	26		<a href="mailto:marketing@calgareaguides.com">marketing@calgareaguides.com</a>
Retail and Site Coordinator	Pam	23		<a href="mailto:pamh@calgareaguides.com">pamh@calgareaguides.com</a>
Summer Camp Coordinator	Barb	35		<a href="mailto:summercamps@calgareaguides.com">summercamps@calgareaguides.com</a>
Administrative Assistant	Brenda	60		<a href="mailto:brendas@calgareaguides.com">brendas@calgareaguides.com</a>
<i>Brownsea Bulletin</i>	Pat Papineau	n/a		<a href="mailto:brownsea@calgareaguides.com">brownsea@calgareaguides.com</a>
General Information		0		<a href="mailto:gqcinfo@calgareaguides.com">gqcinfo@calgareaguides.com</a>
Guide Shop (direct 403-283-8340)		24		<a href="mailto:shop@calgareaguides.com">shop@calgareaguides.com</a>

For additional numbers, information or to connect with voice mail extensions, please call 403-283-8348.

The switchboard will go to voice mail at lunch time daily.

### Want to see your name in print? Be a *Brownsea* contributor

The *Brownsea Bulletin* welcomes Guiding interest stories and event information.

Submissions can be:

- dropped off at or mailed to the Guide Centre
- sent by e-mail to [brownsea@calgareaguides.com](mailto:brownsea@calgareaguides.com)
- faxed 283-9781.

Send submissions in text only (i.e. unformatted).

If the contributor requests a specific format, the editor will reproduce the article as closely as possible.

Articles by e-mail are to be sent as attachments, not part of the e-mail itself. Please have a specific subject line. (e.g. 9th Pathfinder zoo trip article)

Graphics, if requested, should be included with submissions. If issue space does not allow, graphics may be omitted.

All submissions are subject to approval and must be received prior to the publication deadline.

Items received after the publication date may be included in the next issue provided they are not time-sensitive.

### *Brownsea* Publication Deadlines

September Issue	August 31
November Issue	October 31
January Issue	December 31
March Issue	February 28
April Issue	March 31
May Issue	April 30

## Commissioner's Corner: Sharing in the Sisterhood

Eileen Johansen, Calgary Area Commissioner

Welcome to another Guiding year. I hope you have all had a wonderful summer and are looking forward to a fun filled year.

Over the summer, with Guiding friends I travelled to an adult camp in northern England, spent a few days in London and enjoyed a week's home-stay in Richmond. As we prepared for and set off on our adventure, I experienced what Guiding is all about.

When we met to plan our days in London, we realized we all had different things that we wanted to see. Planning would be needed, so we worked as a team, listened to each other and tried new things. Some experiences were better than others, but we learned from each of them. Even as we struggled to carry luggage up and down flights of stairs in Victoria Station at rush hour then dragged it through the streets of London to B-P House, we looked out for each other and stayed positive. We learned never to do that again and to take a cab the next time.

Sharing a small room with three beds and a very compact bathroom, we learned the importance of respecting each other's privacy, scheduling things like showers, and having precise timing so everyone would be dressed and ready to go at the same time. We also learned that three adult women sleep better with ear plugs under those conditions.

When we met our home-stay hostess, we discovered that people around the world are really all the same. We were immediately welcomed and made comfortable in her home. She was prepared to take us everywhere. We saw castles, abbeys, manor houses, Viking displays, Georgian Theatre, Roman ruins, 300 – 400 year-old pubs and beautiful scenery: waterfalls, lush gardens, moors and dales. We learned to walk on cobblestones and not worry when driving on very narrow roads with other cars coming at you. Seeing some of Britain's history and the incredible pride they have in it, we learned why we need to teach our girls about their

heritage and to protect our history. We also learned to stop complaining about the narrowness of some of Calgary's roads.

After our home-stay week with Jane, we went with her to Target '08. Upon arrival, we were assigned to Troutsdale sub-camp where we met a wonderful team of ladies from England, Canada and the US. We were definitely an instant family. As a team, we prepared meals, cleaned up and completed challenges. Crate stacking and tree climbing were definitely new to us! Even when someone could not physically do a challenge, our whole team was cheering on the others. We learned that working as a team is more fun than being alone, that trying new things can be scary but worth it in the end, and that we will grow from these experiences. We also learned at the end of camp that it hurts to leave new friends.

In our last days in England, we visited more places, raced to keep up with tour guides, marveled at Stonehenge and the Roman Baths, enjoyed a boat trip down the Thames, and saw things from a different perspective on the London Eye. We also learned that Pax Lodge is so much better than B-P House – and every Member should experience the friendliness and comfort of a World Centre.

On this journey, I shared in the true Guiding sisterhood with Jan and Laureen, made a new friend in Jane, tried new things, learned from mistakes and experience, pushed myself, enjoyed the past and appreciated the present, and I know that I will do this again.

I am really glad to be home, and even to be back to my job and Guiding work. I also learned that when you take 2,500 pictures, it takes a long time to rename and edit the files, and to choose a reasonable number for other people to share.

I hope you enjoy your Guiding year and that you too will experience the true sisterhood of Guiding.



**Pax Lodge**, located in London, England, is one of four WAGGGS (World Association of Girl Guides and Girl Scouts) World Centres.

To find out more or plan your own visit, check out their website at <http://paxlodge.wagggsworld.org>

“As we prepared for and set off on our adventure, I experienced what Guiding is all about.”



# CAMPSITE ORIENTATIONS

## Mockingbird

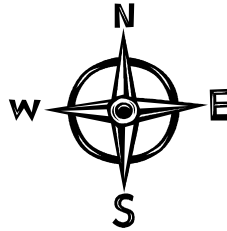
Saturday, September 20 at 1:00 p.m.

*Meet at the Lodge building and park at parking lot straight across from the gate.*

## Batuk

Sunday, September 28 at 2:00 p.m.

*Meet at the parking lot.*



## Westover

Sunday, September 28 at 2:00 pm

## Jubilee

Saturday, October 18th at 9:00 a.m.

*Meet at the Quonset.*

*(Jubilee orientations are held on the second Saturday of each month unless it is a holiday weekend, then on the third Saturday).*

To register, *be prepared* to provide:

- your name and iMIS number
- phone number
- e-mail address
- division

E-mail Brenda at the Guide Centre ([ggcinfo@calgareaguides.com](mailto:ggcinfo@calgareaguides.com)) or call 403-283-8348 extension 0.



## Creatin' at Leighton

*a field trip to remember*



Located on 80 acres southwest of Calgary, the Leighton Art Centre offers a year round art and nature program to 12,000 Calgary and area school children.

New this fall, local groups can book a Saturday visit to the Leighton Art Centre. Come discover the exceptional beauty of our foothills property. Take the guided nature tour where a breathtaking view of over 200 miles of mountains awaits you. Don't be shy: test your lungs on Echo Hill! Explore the creative process through hands-on art projects and a nature/environmental component. Participants will each go home with a personal sketchbook and an acrylic landscape painting!

This program is recommended for Brownies, Guides, Pathfinder and Rangers. Participants should bring a lunch and beverages for the day, and dress for the weather.

Dates are limited and filling fast. Please book soon to avoid disappointment.

For more information, phone the Leighton Art Centre at 403-931-3636 or visit our website at [www.leightoncentre.org](http://www.leightoncentre.org)

## Ready to Camp?

Renée Hill, Calgary Area Camp Adviser

Welcome to another Guiding and camping year!

Camping Advisers are getting ready to assist you to make your camp plans a reality.

To start the year, here are some updates plus a reminder or two.

### Cleaning

Clean-up following camps continues to be an issue. If your site is not left clean, you will be contacted by the Area Office and given until Wednesday night of that week to go back out to clean the site. If you do not, you will be charged an hourly fee for cleaning.

Currently, our maintenance man is doing the cleaning, but we may start contracting this out because he is spending so much time cleaning that he does not have time to do the maintenance. A cleaning service will undoubtedly cost more than the \$25/hour we are charging for Ron's time.

An exception to this: if you do not leave Mockingbird clean, you will be required to go out. We cannot find a cleaning service willing to go up there, so it is our responsibility.

Everyone appreciates arriving at a clean site. If you get to camp and the site is not clean, please call the Area Office on Friday night with the details. If no message is received, your unit will be responsible for any mess.

### Parking

Please respect the "No vehicles beyond this point" signs. They are there for a reason: usually protecting areas that we are trying to rehabilitate.

If you drive to your site to unload, please remove all vehicles to the designated parking areas. These areas are close enough for your emergency vehicle. Also, please be aware that no vehicles are allowed to drive to the Teepee site or Deer Pad at Jubilee; you have to carry your supplies from the parking area.

### Orientations

In past years, once a Guider took an orientation to a campsite it remained valid as long as she continued to camp on that site.

Camping Advisers updated the orientation list based on information received on C2 forms. With the advent of *Safe Guide 2008*, Camping Advisers will no longer see these forms, so we are looking at different ways to maintain the list. This is a work in progress. As soon as a decision has been made, you will be notified.

### Assessors

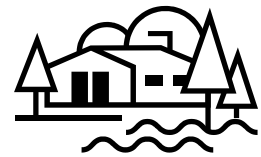
The biggest change Guiders will notice is that CA's no longer sign camp forms. Forms must be sent to the Provincial Office to be acknowledged by a Safe Guide assessor. Province has a team of assessors with a range of experience for their new role.

When sending your forms, please note that the assessor that receives your paperwork may not be from Calgary Area. It is important that you include as much information as possible with your forms. Some suggestions:

- Specify in the subject line of your e-mail whether it is a yellow or red activity, or if it is a water activity.
- Include, if possible, a scan of your first aid certificate.
- Provide details about your camp. (e.g. if you are going to Jubilee, say that it is within the boundaries of the town of Cochrane. If you are going to Mockingbird, note that it is a Girl Guide camp in the Bow Crow Forest Preserve). This will help your assessor make an informed decision.

This information can be put at the bottom of page 1 on the SG.3 form where it asks for planning considerations.

On behalf of the Camping Advisers, I'd like to say that we look forward to working with you. We think it is going to be a great year! Happy camping!!



New to camping in Calgary Area? Been a while since you visited on of our campsites? Need a site orientation? Check the schedule on page 4.

Although camping advisers no longer sign authorizations for camp, they do sign Calgary Area site booking forms.



Do your part to keep our campsites clean!



## International Offerings

Tirian Eynon, Calgary Area International Adviser

### **Calgary Area International Committee events**

#### *International Fair*

Wednesday, October 22, 2008. 7-9 p.m. In the Olave room at the Guide Centre.

#### *Dominica Twinning Project – Adopt-a-unit*

Our next months for sending a package to the Dominica are October 2008 and January 2009. A box for collecting items to be sent to the Dominica will be at the Guide Centre from September to December 2008.

#### *World AIDS Day Pathfinder/Ranger Event*

Sunday, November 30, 2008 at the Guide Centre. Details to be announced.

#### *Area Thinking Day 2009*

Saturday February 21st 2009, Details TBA

### **International Resource Box**

The International Committee has finished putting together its Resource Box.

In it are files with games, crafts and other activities from all over the world! There are also activities and information on WAGGGS, the World Centres, Thinking Day, uniforms and trefoils around the world, and much more.

Please contact the International committee if you would like to have a look through the box. We are looking in to having it stored at the Guide Centre in the Library.

We have also cataloged all of our committee's international resource books. This list will be available for you to browse on the international page of the Calgary Area website. Contact us to borrow items!



Stuck for ideas? Check out our International Resource Box!

### **National and Provincial International News**

We still have **WAGGGS Beijing Olympia Badges** left over so we encourage units to do this theme, perhaps at a camps or meeting in the fall. Now that the Olympics have occurred in China, the girls may have seen news reports and be inspired!

### **International Crafts and Activities Ideas**

#### *Olympia Badge Opening Ceremony*

If you are planning to do the WAGGGS Beijing Olympia Badge, give it a true international flavour by having an opening ceremony.

**“Opening Ceremony”** (opening Circle or Horse Shoe)

- Teams (circles/patrols) march in to the Olympic Hymn
- Each girl makes then carries a flag from a different country, perhaps dressed in different national costumes.
- Raise an Olympic flag; talk about the Olympic symbol and its meaning
- Have a torch relay
- Read a poem or sing a song (eg. Make new friends)
- Try some Tai-Chi as a warm up
- Girls to say their Promise (Athletes oath)

### **WAGGGS Thinking Day themes**

2009 We can stop the spread of AIDS, malaria and other diseases

2010 Together we can end extreme poverty and hunger

2011 We can save our planet



## International Offerings — continued

### *Craft Stick Balance Beam*

#### *What you'll need:*

- 2 jumbo craft sticks
- 2 regular sized craft sticks
- Glittery stickers
- 2 glittery chenille stems (pipe-cleaners)
- Hot glue gun
- Scissors

#### *How to make it:*

Cut the two regular sized craft sticks in half.

Glue two rounded ends of the cut craft sticks to the end one of the jumbo craft sticks to make the legs of the balance beam. Repeat this process with the other jumbo and cut craft sticks.

Glue the two jumbo craft sticks together at the open ends to form the balance beam.

Shape chenille into a stick person with two simple legs, two arms, torso and a head.

Get an adult to help hot glue the gymnast to the balance beam.

Attach stickers to the legs of the balance beam.



Make a craft stick balance beam, then choose whatever position you like for your "gymnast"!

Back-bend, pictured here.

## WAGGGS News

### ***Global launch for HIV and AIDS resource, 6 August 2008***

The WAGGGS training toolkit on HIV and AIDS was launched at AIDS 2008, the XVII International AIDS Conference in Mexico City. "The toolkit focuses on the needs of women and young girls as they are often more vulnerable and in many countries they have limited control over their sexual health and less access to education and HIV information. Armed with accurate and useful information about the disease and its prevention girls and women can help reduce the spread of the virus."

WAGGGS also is making its mark at the AIDS 2008 Global Village, a public space which aims to share knowledge and skills, build coalitions, and promote interactive learning among communities living with and affected by HIV and AIDS.

Sporting their red T-shirts with the recently launched WAGGGS centenary message: *girls worldwide say, "100 years of changing lives"*, the young delegates are displaying features of the AIDS prevention projects in their home countries. They have been enter-

taining visitors with activities about AIDS prevention, including producing an AIDS pledge bracelet, an HIV and AIDS quiz in 17 languages (available on the [WAGGGS web-site](#)) and a puzzle about the WAGGGS brochure "fighting stigma and fear".

### ***World Board Updates***

#### *New Chair*

GGC's own Marg Treloar has been elected Chairman of the WAGGGS World Board! Marg, she has been an active Member of Canadian Guiding for 25 years and has held many positions including key roles on the cookie and marketing committees.

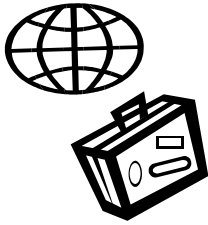
In her private life, Marg is a well known food scientist and product development expert. In 1985 she founded Treloar Product Development International Inc. a consulting firm specializing in improved methods for product development.

#### *New Age Limits*

The age limits for the World Board have been changed to 40% aged 20-35, 40% aged 36-40 and 20% aged over 51.

The WAGGGS working theme for 2009-2011: Global Action.

The tagline for the theme which will address the UN Millennium Development Goals is: *girls worldwide say, "together we can change our world"*



Fact Sheets for the nationally sponsored International events on this page are available on the national website.

All eligible members are encouraged to apply.



## International Travel Opportunities

Alberta-Sponsored Provincial Trip:  
*NORTHERN NEW ZEALAND 2009 TOUR*

OVERALL DATES: July 17 - 30, 2009  
Event Dates: July 20 - 30, 2009

PARTICIPANTS: A group of eight Alberta girls aged 15 ½ to 17 years by the start of the actual event (excluding travel days); two Guiders

PROGRAM and ACTIVITIES: An exciting program filled with opportunities to meet Girl Guides from New Zealand and to share experiences, knowledge and friendship.

By coach, tour the North Island visiting cultural sites, nature reserves, local communities and soak in hot springs. The tour starts in Auckland and ends in Wellington with lots of stops in between. Accommodations are shared room/dormitory style basis and meals will be prepared as a group.

*DISCOVER YOUR POTENTIAL POWER OF YOUTH, PAX LODGE WORLD CENTRE ENGLAND 2009*

OVERALL DATES: July 16 - 26, 2009  
Event Dates: July 20 - 25, 2009

PARTICIPANTS: A group of girls aged 14 ½ to 16 years of age by the start of the actual event (excluding travel days); two Guiders.

PROGRAM and ACTIVITIES: An exciting program filled with opportunity to meet other Girl Guides and Girl Scouts and share experiences, knowledge and friendship.

Discuss issues important to you and young women around the world; find out what you can do to make a difference. Challenge yourself to try something new; see just how far you can reach. Participate in a service project benefiting the local community while learning new skills and having fun. See some of the world famous sights of London and discover for yourself this historical city.

More information will be available in the fall!

*ECUADOR ADVENTURE 2009*

OVERALL DATES: July/August 2009

PARTICIPANTS: A group of girls aged 13 to 17 years by the start of the event; two Guiders.

PROGRAM and ACTIVITIES: Girl Guides of Canada-Guides du Canada, in partnership with world-renowned youth leadership training organization Leaders Today, is offering an amazing opportunity for Members to participate in an exciting International development adventure to Ecuador.

Participants will develop their leadership skills as they work with indigent communities, help build a school, participate in local traditions and gain hands-on understanding of local issues. Explore historic Old Quito, learn and practice Spanish, experience Ecuador's unique ecosystem and hike its magnificent cloud forest. Meet friends from Ecuador Guiding Association and much more.

*SWISS EXPERIENCE , OUR CHALET WORLD CENTRE SWITZERLAND 2009*

OVERALL DATES: August 6 - 19, 2009  
Event Dates: August 10 - August 18, 2009

PARTICIPANTS: A group of girls aged 15 to 17 years by the start of the actual event (excluding travel days); two Guiders.

PROGRAM and ACTIVITIES: A summer event at Our Chalet is an experience you will never forget! A week-long session offers girls a chance to challenge themselves in a beautiful environment whilst meeting new people.

Activities include hiking, abseiling, climbing, water sports and day-excursions in Switzerland.

Check out the Our Chalet summer program package link:

<http://www.ourchalet.ch/en/Programme/youthsummerevents/2009summerevents>

## The 2009 International Thinking Day Postcard Exchange

Jan McKinney, Moderator—Thinking Day Postcard Exchange



Greetings everyone! It's time to join again and to start creating the list for the 2009 Thinking Day Postcard Exchange! This will be the twelfth year and we are looking forward to another great year!

Please spread the word to all your Guiding and Scouting friends to help make this project a huge success. Last year we had 2961 US troops and 1057 International Units (from 49 countries) participating. The exchange will begin the first part of September.

To learn more about the program or to sign up, please visit [www.mythinkingday.com](http://www.mythinkingday.com).

### TO JOIN THE EXCHANGE:

You must have a Yahoo Account — it's free!

To sign up visit [www.mythinkingday.com](http://www.mythinkingday.com). Select your area from the *Sign Up Now! Where are you?* drop down box then fill out the registration form. (If the site shows a blank page, the site is busy with so many trying to access it. Please keep trying.)

After you submit the form, you will receive an invitation within a day or two asking you to join the Yahoo TD Postcard Exchange group: <http://groups.yahoo.com/group/TDPostcardExchange/>. You must 'ACCEPT' the invitation.

If you do not receive this invitation, please contact the moderator for your state/country listed on the mythinkingday website.

Once you access the database ( <http://groups.yahoo.com/group/TDPostcardExchange/database> to directly access it), please verify that the information for your unit/troop is listed correctly. Contact me or your moderator with any changes.

For card examples, patch order instructions and answers to basic questions, please browse at [www.mythinkingday.com](http://www.mythinkingday.com). If you have any other questions or problems, please contact the moderator for your state/country listed on the mythinkingday website, or contact me at [mckinneyzoo@comcast.net](mailto:mckinneyzoo@comcast.net).

## Youth Awards

Sunday, October 26, 2008

2:00-4:00 pm

John Dutton Theatre

616 McLeod Trail S.E Calgary

Canada Cord  
Commonwealth Award  
Chief Commissioners Gold Award  
Duke of Edinburgh Awards – Gold, Silver and Bronze

Most girls have been working towards these awards over the past year. They must have fulfilled all requirements by the date of the ceremony.

Guiders registering girls for the awards ceremony can pick up forms at the Girl Guide Shop.

Please get all of the proper forms in to the office by September 26, 2008. Late forms will not be accepted to this year's ceremony.

Invitations to the awards ceremony will be sent to each girl receiving an award.

For more information on the event, please contact Tanya at [marketing@calgareaguides.com](mailto:marketing@calgareaguides.com), or call 403-283-8348 ext. 26.

Duke of Edinburgh awards information: [www.dukeofed.org](http://www.dukeofed.org)

For information on other awards, please visit our National website [www.girlguides.ca](http://www.girlguides.ca)

# Fall Into Stenciling!



Vacations are ending, kids are back in school and unit meetings are starting.

## Why not begin the season with a community service project?

Stenciling storm-drains is easy and is a great outing for families, individuals and groups.

The Guide Centre or Trout Unlimited Canada can provide free stencils and door-hangers in all areas of Calgary.

The goal of the Yellow Fish Road program is to help Canadians understand that stormdrains are the doorways to our rivers, lakes and streams. Preventing pollutants from entering our stormdrains is critical to protecting and improving water quality and aquatic habitat.

For more information, please contact Heather at the Guide Centre (403-283-8348 ext. 30, [resource@calgareaguides.com](mailto:resource@calgareaguides.com), ) or Roger Kelley at Trout Unlimited Canada, 403-256-1537.



## Volunteers Who Love a Party!

We need a group of volunteers to help us plan

the:

51st Annual Calgary Area

## Awards and Appreciation Dinner

Time commitment will be a couple of evening meetings and to help the day of the event.

Contact Tanya if you are interested in participating!

[marketing@calgareaguides.com](mailto:marketing@calgareaguides.com) or call 403-283-8348 ext. 26.



**SATURDAY, OCT. 18 • 4:30 P.M.**

# CALGARY STAMPEDERS

VS **WINNIPEG**

**4th ANNUAL GIRL GUIDES GAME**

**\$12** RESERVED SEATS (TAXES & FEES INCLUDED) REGULARLY \$27.00

Take advantage of this incredible offer and bring your friends & family out to experience the Horsepower!

FOR MORE INFORMATION CONTACT:  
**GIRL GUIDES - TANYA CARLSON**  
PHONE: 403 283 8348 EMAIL: [marketing@calgareaguides.com](mailto:marketing@calgareaguides.com)

# Girl Guides of Canada—Calgary Area

## Awards 2007-2008

### Alberta Rose Award

Pat Istead	Calgary Area
Leslie Horton	East Bow Division

### Medal of Merit

Esme Boyle	Calgary Area
Elaine Lingnau	Rocky Mountain Division
Colleen Reynolds	University Division

### Gold Merit Award

Donna den Otter	Calgary Area
Wendy Saddler	Blue Sky Division
Bernadette O'Connor	Pioneers Division
Pat Burge	Rocky Mountain Division
Anar Dhanji	Rocky Mountain Division
Yasmin Fazal	Rocky Mountain Division
Rozina Velji	Rocky Mountain Division

### Silver Merit Award

Sue Fortunka	Calgary Area
Amber Lapp	Calgary Area
Dixie McIvride	Calgary Area
Jacqueline Schnider	Calgary Area
Kathy Dion	Beth Riddoch Division
Leslie Jones	Beth Riddoch Division
Sandy Williams	Beth Riddoch Division
Lori Bryden	Crowfoot Division
Marguerite Burge	Rocky Mountain Division
Margaret Hopkins	Rocky Mountain Division
Patsy Sheldon	University Division

### Honorary Life Membership

Enidd Isaac	Alberta Province
Freda Osborne	Foxlease Division

### Bronze Merit Award

Michelle Berndtsson	Calgary Area
Shelli Dubs	Banff Coach Division
Kori Nash	Banff Coach Division
Carolyn Vacey	Banff Coach Division
Tricia Lane	Blue Sky Division
Paige Ross	Blue Sky Division
Kathy Ervin	Crowfoot Division
Leslie-Anne McKenzie	Crowfoot Division
Lysha Rover	East Bow Division
Tracey Schafer	East Bow Division
Cathie Belenky	Foxlease Division
Sonya Bayliss	Rocky Mountain Division
Ingrid Carleton-Dodds	Rocky Mountain Division
Chelsea Heitman	Rocky Mountain Division
Twila Tayfel	Rocky Mountain Division
Gwen Vesterback	Rocky Mountain Division
Alisha Visanji	Rocky Mountain Division
Laurie Aitchison	Silverbirch Division
Shelly Bearss	Silverbirch Division
LaVerne Bramall	Silverbirch Division
Karen Glaser	Silverbirch Division
Virginia Clements	Sunrise Division
Cyndi Williams	Sunrise Division
Heather Matiisen	University Division
Cindy Schnee	University Division
Deborah Walushka-Longphee	University Division



### Team Award

#### *Crowfoot Division*

#### **Mitotem District**

Andrea Bernardo  
Christine Berry  
Lori Bryden  
Becky Campbell  
Suzanne Collins  
Candace Gamez  
Krystal Homan  
Laurel Howard Mason  
Lise Kerrin  
Debra Lewis  
Hope McAdoo  
Leslie-Anne McKenzie

Laura MeLeman  
Jodie Moffatt  
Sandra Nazaruk  
Amanda O'Connor  
Roberta Post  
Kim Rezazadeh  
Lara Schmitz  
Tricia Taylor  
Jessica Terpstra  
Jennifer Tomkiw  
Danielle Van Der Walt

#### *Foxlease Division*

#### **106<sup>th</sup> Guides, 73<sup>rd</sup> Pathfinders, 17<sup>th</sup> Rangers**

Carolyn Bilton  
Peggy Burke  
Erin Burke  
Debi Butz  
Nikke Butz  
Debbie Fisher  
Shannen Hoffman  
Veronica Hoffman  
Emily Knowles  
Sarah Knowles  
Judy Szabo

#### **127<sup>th</sup> Guides**

Heather Anderson  
Megan Belenky  
Heather Brunette  
Bonnie Loucks  
Susan Wilcox

#### **24<sup>th</sup> Pathfinders**

Louise Cameron  
Judy O'Keefe  
Laura Querin

#### **24<sup>th</sup> Senior Branches**

Pamela Baxter  
Katie Baxter  
Kristin Baxter  
Vladka Juranek-Statham  
Lauren O'Keefe  
Amanda Omelusik  
Nadine Sprague  
Sharla Statham

## Gold Thanks Pin

### *Calgary Area*

Manda Adams  
Tirian Eynon  
Renée Hill  
Lydia Karabin  
Leigh Monette  
Sheila Morrison  
Debbie Rouston  
Gail Wearmouth  
Cynthia Zuidema

### *Banff Coach Division*

Sarah Sy

### *Blue Sky Division*

Elizabeth Dewitt

### *Beth Riddoch Division*

Kirsten Lawson  
Rachel Smith  
Donna Yaklin

### *Crowfoot Division*

Leah Allen  
Lisa Barkley  
Melva Blood  
Kim Brown  
Tammy Calhoun  
Angela Carroubourg  
Leesa Edington  
Courtney Edwards  
Jacquelyn Ervin  
Megan Evans  
Heather Gardiner  
Suzanne Greenland  
Kim Kelly  
Maggie Mailman  
Ingrid Meeuwisse  
Stacie Miller  
Margaret Peach  
Athena Peers  
Marion Phillips  
Annette Rideout  
Janet Tattersall  
Nadine Velasco  
Jennifer Wadleigh  
Sherri Zielke

### *Frontier Division*

Stephanie Barritt  
Chantelle Mooney  
Dawn Wilson

### *East Bow Division*

Stacey Ferec  
Juliette Lefebvre  
Christine MacLellan  
Sandra McDougall  
Katherine Nelson  
Teresa Pearen  
Natasha Roberts  
Trena Suarez  
Holly Sweeney

### *Pioneers Division*

Cindy Archibald  
Annette Bruneau  
Shena Foster  
Bernice Hill

### *Rocky Mountain Division*

Jennifer Bonneau  
Patricia Carr  
Zhara Daya  
Alisha Dhanji  
Sharean Esmail  
Noureen Fazal  
Safana Gangi  
Sophia Jaffer  
Alisha Merchant  
Alyssa Mitha  
Fatima Moledina  
Katherine Moore  
Rehana Mukadam  
Corina Smith  
Sharfroz Velji  
Ziana Visanji  
Tricia Wilson

### *Silverbirch Division*

Kathleen Kraus  
Marianne Laarz  
Chelsea McIlvrde

### *University Division*

Lindsay Amundsen  
Tenley Caruk

## Silver Thanks Pin

### *Beth Riddoch Division*

Lisa Elliott  
Leanne Pierce  
Sylvane Quillien

### *Sunrise Division*

Ed Stewart

## Letter of Commendation

### *Calgary Area*

Elizabeth Chabassol  
Colleen Reynolds  
Deborah Sugden

### *Foxlease Division*

Jennifer Kuehner  
Susan McCowan

### *Crowfoot Division*

Tammy Calhoun  
Angela Carroubourg  
Leesa Edington  
Ingrid Meeuwisse  
Cindy Simpson  
Janet Tattersall  
Jennifer Wadleigh

### *Pioneers Division*

Corrina Billings  
Tammy Campsall  
Tia Gareau  
Judy Shearing  
Wendy Thompson

### *Rocky Mountain Division*

Kerri-Ann Hopkins  
Maggie Hopkins

## Calgary Area Gold Special Award

### *Calgary Area*

Laureen Bowman  
Adeline Bratko  
Annette Jaenen  
Janet Moroz-Clarke  
Mary Pelland  
Holly Sweeney  
Beverley Wahl  
Sandy Williams

### *Banff Coach Division*

Laurie McIntosh  
Sarah Taylor

### *Beth Riddoch Division*

Enidd Isaac  
Sandra Whitty

## Calgary Area Silver Special Award

### *East Bow Division*

Rose Martin  
Murray Mill  
Riverbend Community Association

### *Foxlease Division*

Colleen Kocher

Congratulations to everyone who received an award, and thank you to those who took the time to recognize another Guider, a team or a member of the community for their contribution.



## Calgary Certificate of Appreciation

### *Calgary Area*

Michelle Berndtsson  
Eileen Johansen  
Therese Lynch  
Michelle Olfert  
Brandy Wing

### *Banff Coach Division*

Lori Abbott  
Patricia Ac  
Lori Anderson  
Christine Axani  
Angel Basilis  
Kelly Becker  
Deanna Berg  
Lisa Bernar  
Lee Bramley  
Trish Brown  
Ailsa Campbell  
Pat Carignan  
Jo Anne Cummings  
Melanie Deliman  
Claire Drydall  
Shelli Dubs  
Marg Easson  
Pat Harasym  
Kelsey Hartviksen  
Carol-Ann Hill  
Laurie Holtby  
Gwen Impey  
Jennifer Kaytor  
Hilda Lawson  
Denise Lawson  
Lee Liu  
Cindy Lodge  
Sierra Lodge  
Candace Mack  
Christine MacPherson  
Joanne MacTaggart  
Jenna Marangoni  
Carolyn Murphy  
Elizabeth Patterson  
Sheila Perkins  
Heather Rempel  
Jennifer Shore  
Arzmund Teja  
Shandy Tilley  
Lisa Tomalin-Reeves  
Carolyn Vacey  
Corinne Ward  
Marion Whitworth  
Shelly Young  
Donna Zmetana

### *Blue Sky Division*

Pineridge Community  
Centre  
Windsor Plywood  
Darci Gregorie  
Kevin Van Broeck  
Karen and Steve  
Whiteley  
Jodi Gingras  
Darrel Schrieber  
Pauline Pender  
Sherry Boulet  
Rob Smeyers  
The Browne Family  
The Wolnowski Family  
Bonnie and Dave  
Dewitt  
Sharon Anderson  
Meribeth Barclay  
Claire Battle  
Adeline Bratko  
Patricia Coul  
Karra Coutu  
Andrea Dallas  
Leanne Dayman  
Beth Dewitt  
Melanie Dreger  
Michelle Dumont  
Krystie Gerald  
Elwyn Goodsir  
Ashley Horton  
Denise Horton  
Kathy Hutchinson  
Rachelle Knittle  
Meagan Lim  
Heather Marcin  
Joan Mclaughlin  
Melissa Moss  
Leslie Nyilas  
Dorothy Peartree  
Michele Pirot  
Crystal Ryan  
Wendy Saddler  
Tracey Schlunzen  
Helen Sharpe  
Debbie Tomaszewski  
Mandy Zhu

### *East Bow Division*

Trish Baran  
Alice Chow  
Teresa Clark  
Dan Clark  
Arlene Gaucher  
Dave Gerlitz  
Dave Goerzen  
Pat Gutierrez  
Pat Harding  
Donna Lowey  
Alois Neumier  
Diane Nolin  
Stephen Powell  
Tracey Rice

### *Foxlease Division*

Catherine Arthur  
Sandy Arthur  
Jesse Chambers  
Cindy Conaghan  
Tracy Danberger  
Angeline Gray  
Justine Hendrick  
Renée Hill  
Breanne Humphrey  
Ashley Jarding  
Amanda Ludwig  
Joan MacIsaac  
Sabrina Manning  
Bri-Anna Manning  
Colette McGowan  
Lisa McLean  
Janelle Molyneaux  
Michelle Morris  
Alana Poos  
Nicholle Sauoie  
Judy Shearing  
Jara Spence  
Susan Sweetnam  
Margaret Talty  
Georgia Tonita  
Janet Van Vierssen  
Trip

### *Frontier Division*

Andie Hall  
Sarah Limacher

### *Silverbirch Division*

Laurie Aitchison  
Barb Augustyn  
Shelly Bearss  
Brenda Belick  
Sandi Bollhorn  
Rosanne Bowman  
LaVerne Bramall  
Susan Bray  
Gwen Brown-Weddell  
Catherine Clegg  
Carla Cook  
Heather Craig  
Karen Crosby  
Danielle Cross  
Maureen Floate  
Tiffany Fontaine  
Anita Fraser  
Karen Glaser  
Cheryl Herle  
Kimberly Herle  
Brittany Herle  
Kate Istead  
Monica Jepson  
Mira Kosevich  
Kathleen Kraus  
Kristy Kupidy  
Marianne Laarz  
Kim Lawrence-Young  
Eleonor Leung  
Judy Lupton  
Hannah Lupton  
Leslie Marshall  
Jenny McDonald  
Chelsea McIlvrde  
Johanne McIntosh  
Therese Miller  
Dianna Mitchell  
Karen Rawson  
Gay Robinson  
Beth Rowe  
Kristin Sedgwick  
Laura Sharp  
Kathy Sharp  
Michelle Shen-  
kenfelder  
Diane Talbot  
Sachi Tanaka-Hess  
Tina Turner  
Kim Verrier  
Bev Wahl

### *Rocky Mountain Division*

Nancy Amoruso  
Bob Anderson  
Karen Anderson  
Teri Anderson  
Donald Anderson  
Neta Butz  
Marion Eberle  
Dee Hoyano  
Susan Lefebvre  
Dwain MacNeill  
Sandra McFarlane  
Aimee Michell  
Michelle Moisan  
Jessica Poutanen  
Pamela Smith

### *Sunrise Division*

Tess Brokop  
Terry Dychkowski  
Adete Lacerte  
Judi Meston  
Trish Overwater  
Elizabeth Pearson  
Beth Riddoch Division  
Lisa Elliott  
Kirsten Lawson  
Leanne Pierce  
Sylvanne Quillien

### *University Division*

Creekside Calgary Co-  
Op  
Janice Brown-Cooke  
Kelly Woolf

### *Crowfoot Division*

Cheryl Borden  
Myrna Campbell  
Christine Campbell  
Amanda Culshaw  
Rosie Grover  
Beth Halpin  
Donna Holroyd  
Jennifer Kent-  
Charpentier  
Jenna LaMarre  
Leah Paulucci  
Marci Rosin  
Jennifer Wile



Girl greatness starts here!

Calgary Area Girl Guides

2188 Brownsea Drive NW  
Calgary, Alberta  
T2N 3G9

Phone: 403-283-8348

Fax: 403-283-9781

E-mail:

ggcinfo@calgareaguides.com

Find us on the web!  
[www.calgareaguides.com](http://www.calgareaguides.com)

If you are reading this, chances are you view the *Brownsea Bulletin* on-line (because this is where the address label would go).

THANKS for helping us to *use our resources wisely* and *protect our common environment* by saving on postage, paper and printing!

CALGARY AREA

## GUIDE SHOP

2188 Brownsea Drive NW

Phone: 403-283-8340 Fax: 403-283-9781

e-Mail: [shop@calgareaguides.com](mailto:shop@calgareaguides.com)

Local and out-of-town orders and  
mail-orders welcome!  
Phone, Fax or e-mail.

### Shop Hours

September and October 2008

Monday to Wednesday	10:00 a.m. - 5:00 p.m.
Thursday	10:00 a.m. - 8:00 p.m.
Friday	10:00 a.m. - 5:00 p.m.
Saturday	10:00 a.m. - 4:00 p.m.



New Calgary Area crest!  
\$1.85 each

Please Note: Due to a manufacturer's error, Brownie and Guide sashes will not be in stock until sometime in October.

Our staff will be happy to place the parent's name and phone number on a backorder list to be called as soon as they arrive.

We apologize for the inconvenience.

